



## IT700 VISION - TWO CAMERA CAP INSPECTION SYSTEM

### Dual Camera System for Cap Inspection

The IT700 Vision system will detect cap defects on metal, glass or plastic containers. The system uses two high speed cameras to inspect each container at full production speeds. The ergonomic design provides easy access to the control panel and supports fast tool-less change overs.

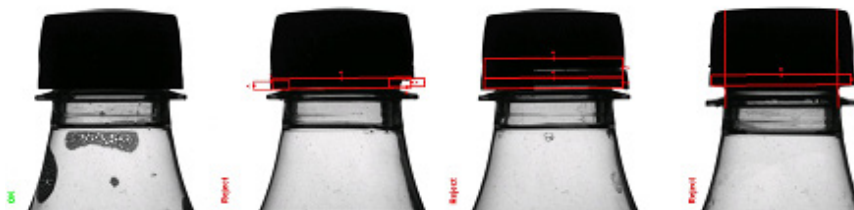
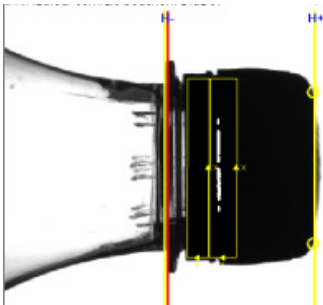
### This system is ideal for detecting

- Missing thread
- Cap presence
- High caps/cocked caps
- Broken tamper band



### IT700 Vision Technology - Theory of Operation

The Cap Inspection system uses independent front and back inspection units to capture the image of each container. Each unit includes a camera with microprocessor for image acquisition and processing and industrial optics. The enclosed inspection tunnel utilizes an analog light driver to control lighting intensity. As the container passes through the system the independent cameras capture the image of the front and back of the cap. If a container has shifted out of position, a special "dynamic position compensation" algorithm compensates for the movement and adjusts the image. Each feature of the cap is then analyzed to determine if the feature is within the user defined tolerances. The systems advanced gauging tools can utilize the bottle neck ring or shoulder contour depending on the container design. This allows the system to use a consistent reference point regardless of variations in container height. The system will analyse the cap height in relation to the reference point at multiple locations across each axis. The system will also analyse the tamper band to determine if the band is damaged or missing.



# IT700 VISION - TWO CAMERA CAP INSPECTION SYSTEM

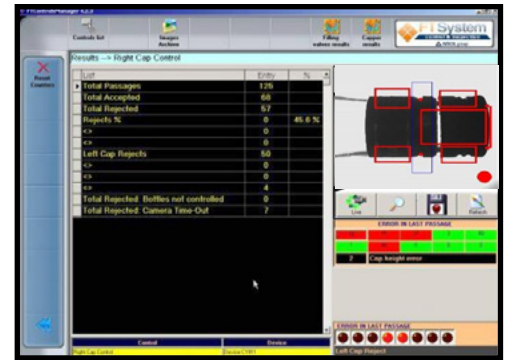
## CAMERA SYSTEM FEATURES

- Stainless steel support structure for camera and illumination source
- Each inspection unit includes a high speed industrial camera for image acquisition and processing
- Special optical group that lengthens focal view and improves image quality in the production environment
- Enclosed illuminator designed for uniform lighting of all closure surfaces
- Strobing LED light source with analog light driver - Lighting intensity can be set for each container type to optimize image quality
- Back light (standard), Front light (available)
- Two (high resolution) cameras



## CONTROL SYSTEM FEATURES

- Independent controller housing
- Microprocessor unit with integrated UPS (uninterrupted power supply)
- Ethernet communications port
- Industrial PC with 15" TFT touch screen monitor
- Custom HMI Software
- Simple user interface designed for easy set up and change-over
- Segregated data base for storage of historical production data for up to 6 months including storage of past failure alarms with date and time stamp
- Optional capper monitoring system will monitor the performance of each individual capper head and provide statistical data including number of caps applied, number of rejects, percentage of rejects
- When equipped with capper monitoring and a standing reject device the system will also include a sampling function that will divert bottles of line in sequence for quality control purposes



## ADDITIONAL INSPECTIONS INCLUDE

- Fill level inspection with High Frequency or X-ray technology
- Lot code reading / Bar code reading
- Laser code detection

Contact our experienced sales teams today for a comprehensive review of your application(s) and to see how the IT700 Vision System can benefit your company.

powered by:  **FTSYSTEM**  
control & inspection